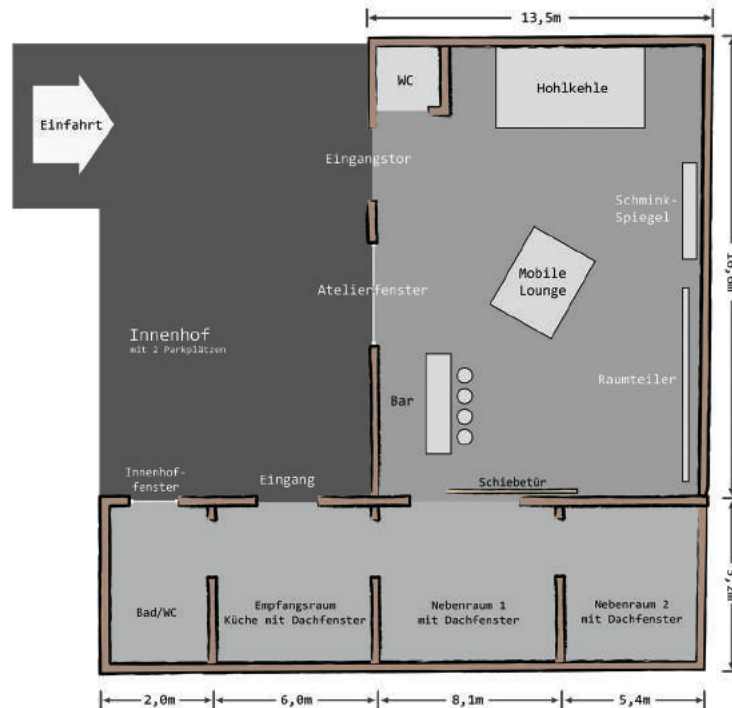


Located in the center of Munich this rental studio has 380 qm in total. It consists of one studio and three large side rooms, which can be rented additional on a modular base. The ceiling height measures 4-6 m and is accessible with normal passenger cars



#### Key data studio:

- 250 qm studio (16 m x 13 m)
- 5,5 m hohe hollow profile/projection wall
- 4 x foamboard with a stand
- 16/32/63 ampere high voltage current
- 3 m x 4 m studio window - can be dimmed
- Movable walls, lounge, table, designer furniture
- Designer kitchen, catering- and bar-area
- Styling area with a mirror
- Professional sound system
- Highspeed WLAN

#### Key data side rooms:

- 2 optional rooms including designer kitchen 95 qm

#### Key data Make-up and Styling area:

- Sink, towels, bathrobe
- Wall for visual protection
- Steamer
- Clothes rack
- Mirror
- Table

#### Key data kitchen:

- Coffee machine, electric kettle
- Fridge
- Dishwasher
- Oven, electric stove
- Tableware, glasses, cutlery, etc.